

Planned Response for suspected sexual or otherwise abusive behavior at Exil events to be used in criminally relevant cases

Legend:

C = Complainant, PA = Person Affected, E = Employee (professionals and volunteers), PC = Person in Charge, PS = Person under Suspicion, EO = Executive Office, BM = Board Member, VC = Volunteer Coordination

C (PA or a witness) reports a suspicious action to E, or E witnesses a suspicious action

With an ongoing or imminent threatening situation you can call the police (110) straight away!

E describes suspicious action anonymously and in hand writing:

- What was I told?
- What did I hear?
- What did I see myself?
- Who is the PA?
- Who is the PS?
- Who are witnesses?

If possible, take contact information from each person.

Without fail, lock this away and keep it locked!

E documents the case, anonymously.

concerning minors: (legally bound to be counselled §8b SGB VIII)

Mo-Fr:
Kinderschutz-Zentrum Osnabrück
Tel: 0541 330 36-0

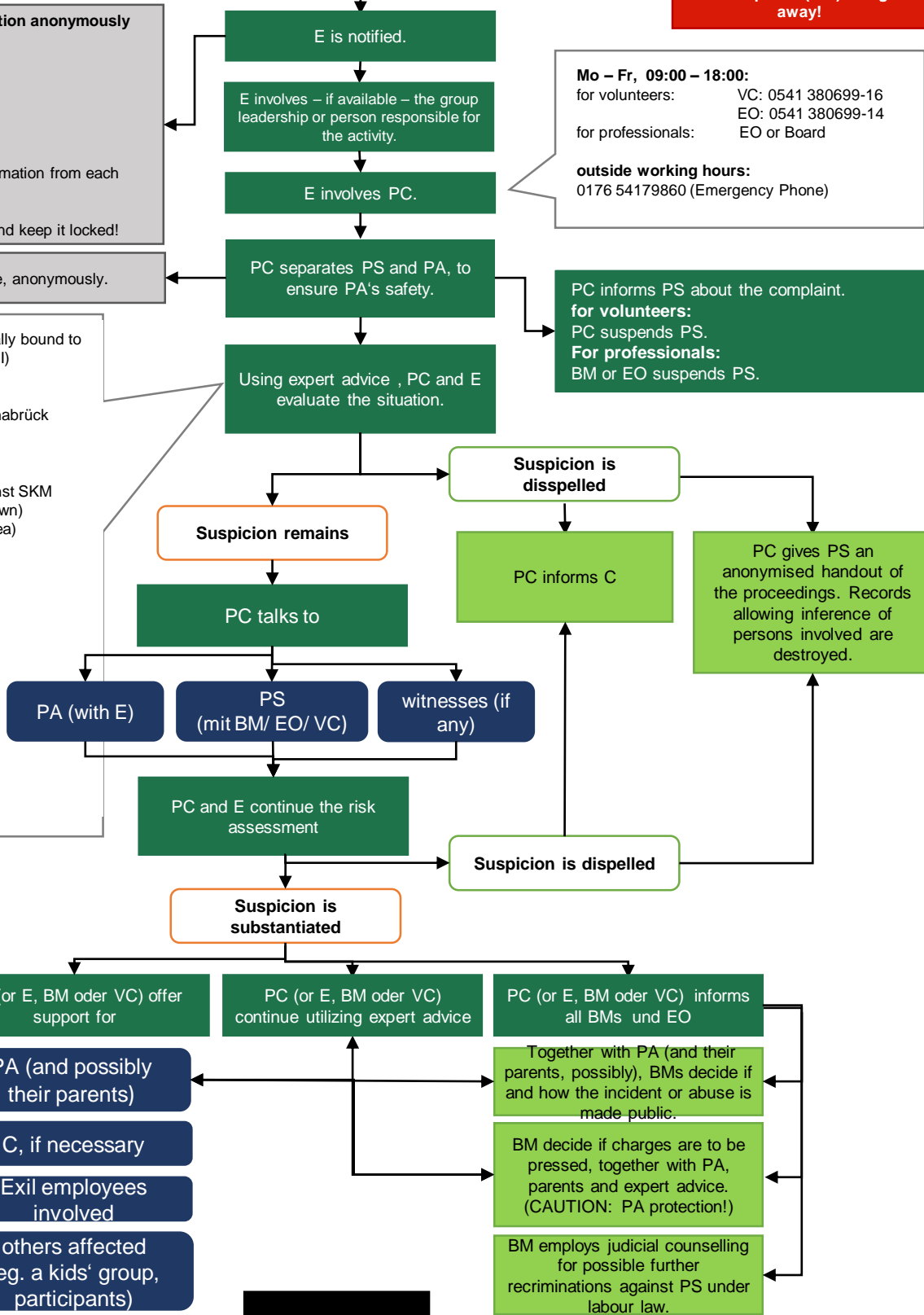
Sa/So in emergencies:
Kinder- und Jugendnotdienst SKM
Tel: 0541 27 27 6 (OS town)
0541 511 44 (OS area)

concerning women:

Mo-Th:
Frauenberatungsstelle,
Tel: 0541 803405

**Mo-Fr 09:00 - 12:00,
Sa/So 10:00 - 11:00**
Frauennotruf
Tel: 0541 860 16 26

für other emergencies:
Police - 110



Follow-up counselling or supervision for involved leading personnel

Evaluation of the Planned Response!